

ALTICAM™ 09EO1

Stabilized Imaging System



FEATURES:

- High zoom EO daylight imaging
- Effective 160x zoom
- Gyro-stabilized with coordinate hold mode
- Includes AVS video processing board
- Picture-in-picture (PiP)
- Articulated nose enclosure
- Designed for small UAVs - also used on piloted planes, blimps, ground vehicles and unmanned surface vehicles

GIMBAL	
Weight	2,775 gm (3,470 gr with nose enclosure)
Dimensions	30 cm length x 20 cm Ø cylinder
Gimbal Sequence	Roll-over-tilt
Tilt	80° forward; 45° back
Roll	Endless 360°
Slew Rate	45°/sec
Performance @ 1 Hz and 2 Hz	39 dB and 38 dB attenuation
Power Supply Range	12 - 14 VDC, 12 W continuous, 20 W peak
Communication	Serial communication, 57,600 bps, Alticam command set

IMAGER	EO	TELESCOPE
Wavelength	400-900 nm	400-900 nm
Horizontal Field-of-View (HFoV)	49°-1.7° (without digital)	.6°-.3° (without digital)
Zoom	58x (with Sony internal digital 2x)	170 x (0.3°)
Pixels	640 x 480	640 x 480
Video Output	Composite NTSC	Composite NTSC
Video Enhancement	Onboard de-jitter, tracking and enhancement from raw digital video from imagers	Onboard de-jitter, tracking and enhancement from raw digital video from imagers



STABILIZED IMAGING SYSTEMS

3100 West Cascade Ave. / Hood River, OR 97031 / 541.387.2288 / info@hoodtech.com / www.hoodtech.com

ALTICAM™ 09EO1

Stabilized Imaging System

BACKGROUND:

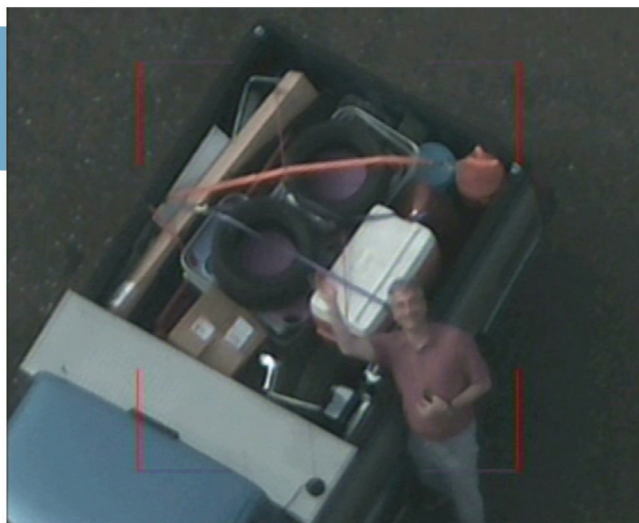
The Alticam 09EO1 uses the increased volume of the Alticam 09 MWIR2 nose to house improved EO performance. This is accomplished by pairing a Sony zoom imager with a high definition telescope. The result is a 6X reduction in horizontal field-of-view (HFoV) when compared to an Alticam 07EO1 turret.

The images below demonstrate the clarity at different HFoVs and slant ranges:

48.7° HFoV at 7,600 ft



0.4° HFoV at 7,600 ft



Hello from 3,000 ft.



STABILIZED IMAGING SYSTEMS

3100 West Cascade Ave. / Hood River, OR 97031 / 541.387.2288 / info@hoodtech.com / www.hoodtech.com